

2013 Rouge River Report Card

A comparison of the historic and current extent of the river's impairments

Prepared by:

Rouge River Advisory Council (RRAC)

Dan Ballnik, Chair

Brandy Siedlaczek, Vice-Chair

Bill Craig, State Public Advisory Council Representative

Jen Tewkesbury, State Area of Concern Coordinator

Rouge River Watershed A Great Lakes Area of Concern (AOC)

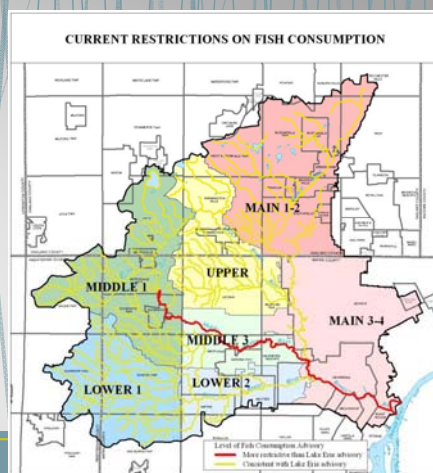
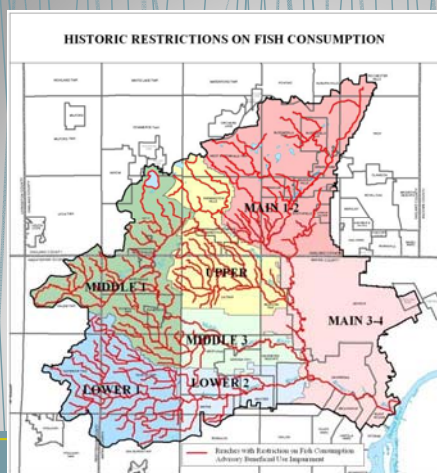
With the following Beneficial Use Impairments (BUIs):

1. Restrictions on fish consumption
2. Fish tumors and other deformities
3. Restrictions on dredging
4. Degradation of benthos
5. Eutrophication or undesirable algae
6. Beach closings / bacteria impairment
7. Degradation of aesthetics
8. Degradation of fish and wildlife populations
9. Degradation of fish and wildlife habitat



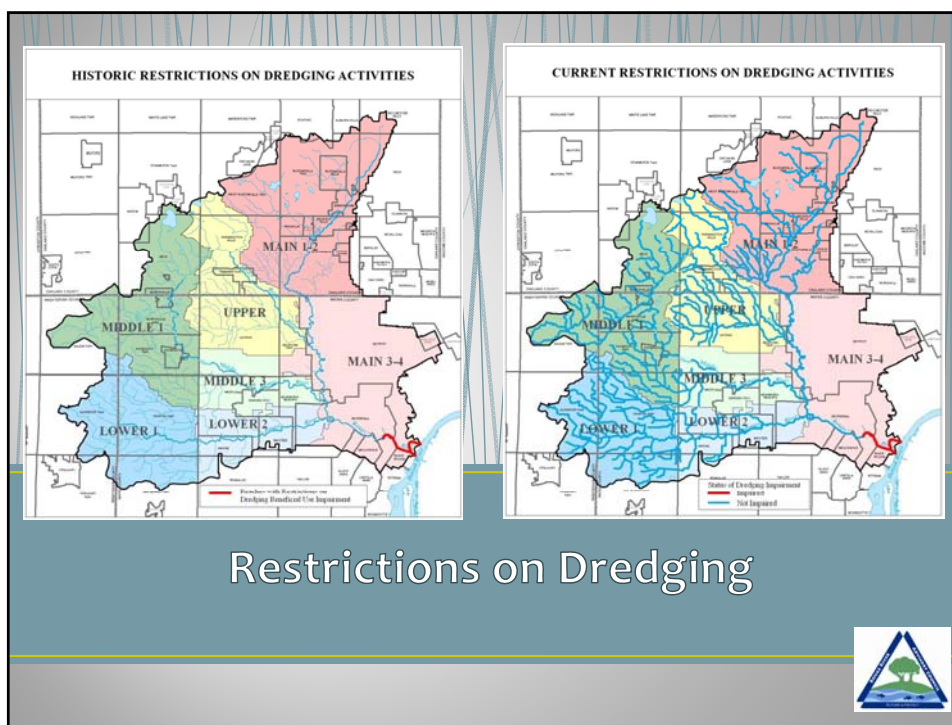
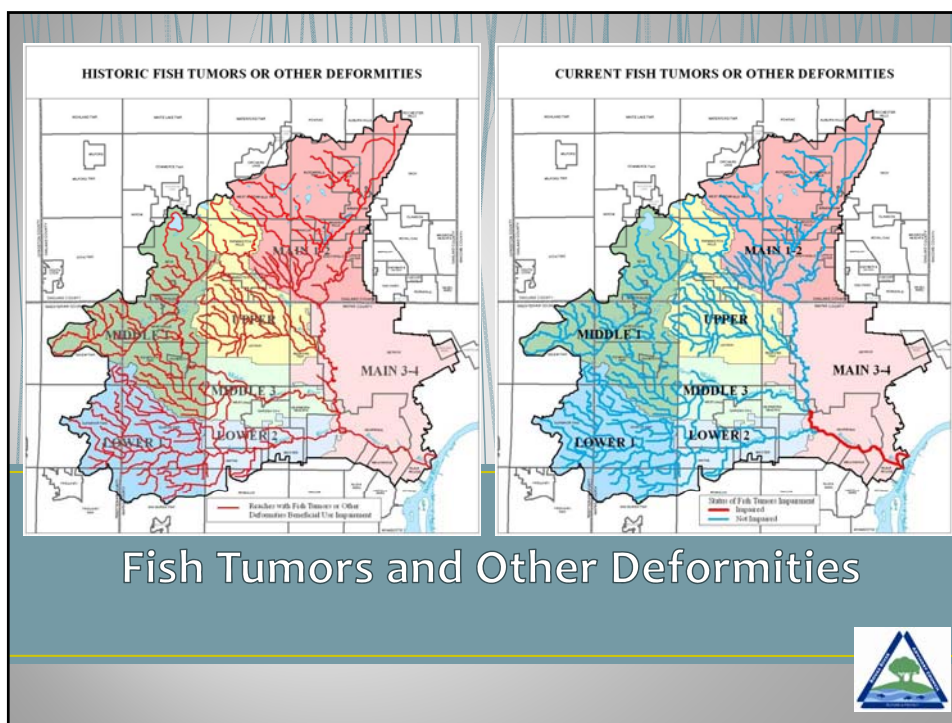
The Condition of the Rouge River....

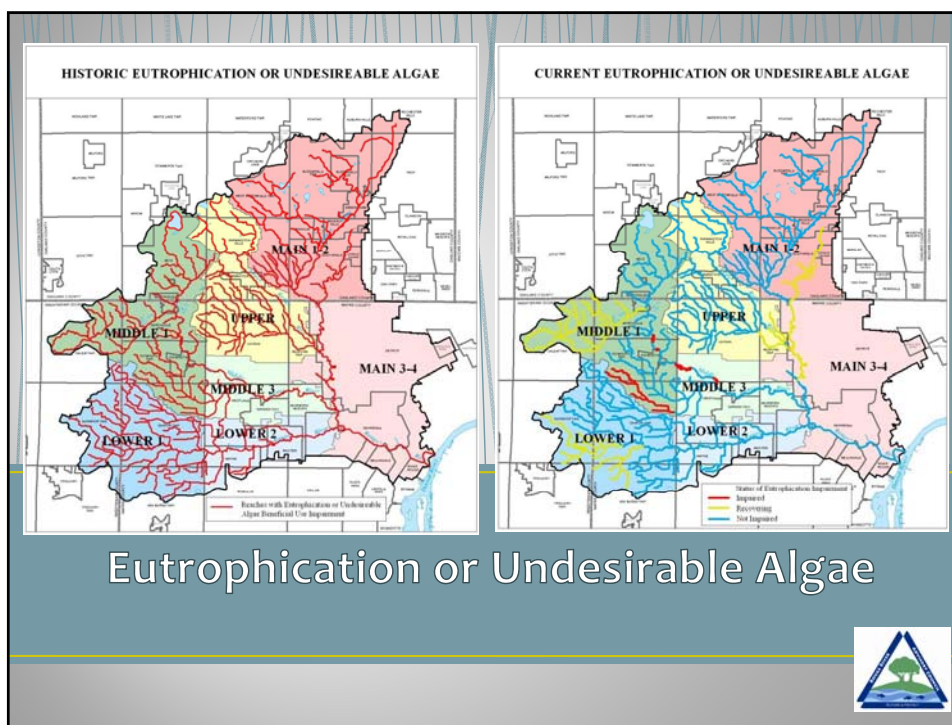
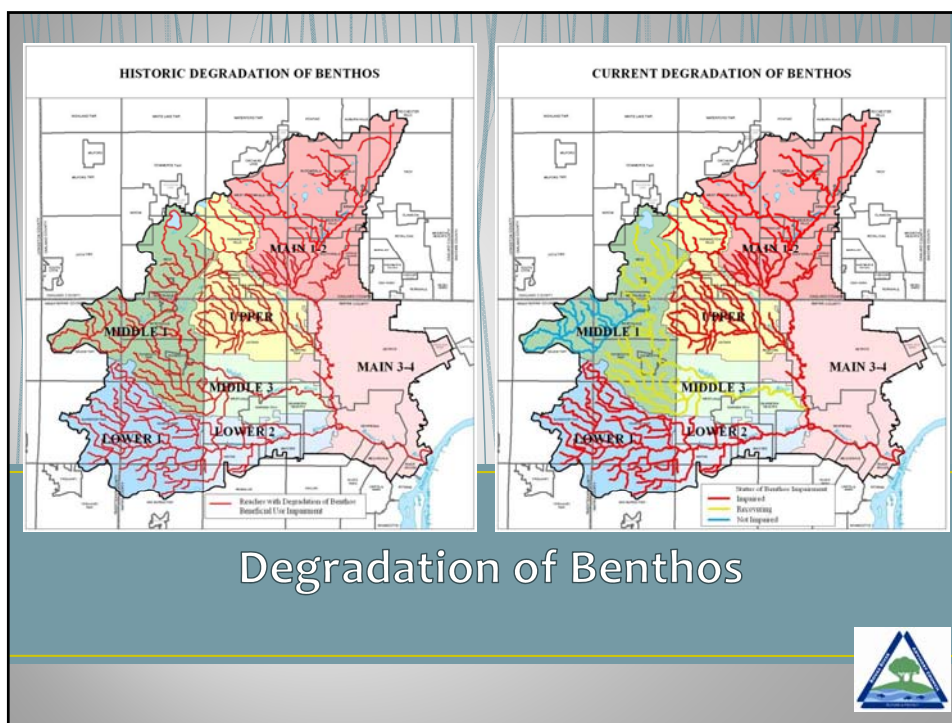
- It is better than you think!

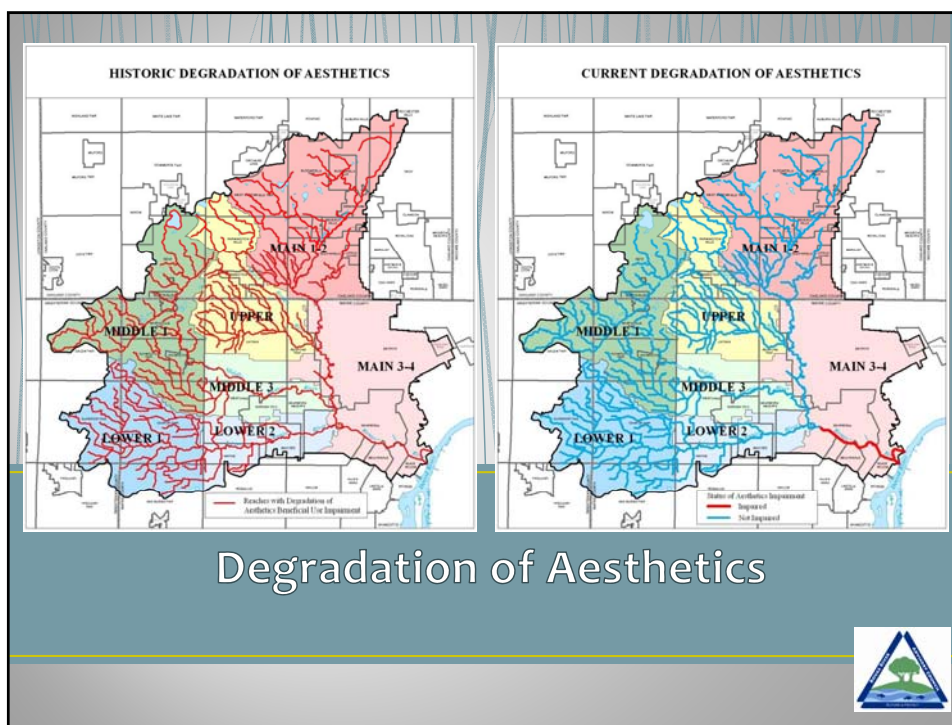
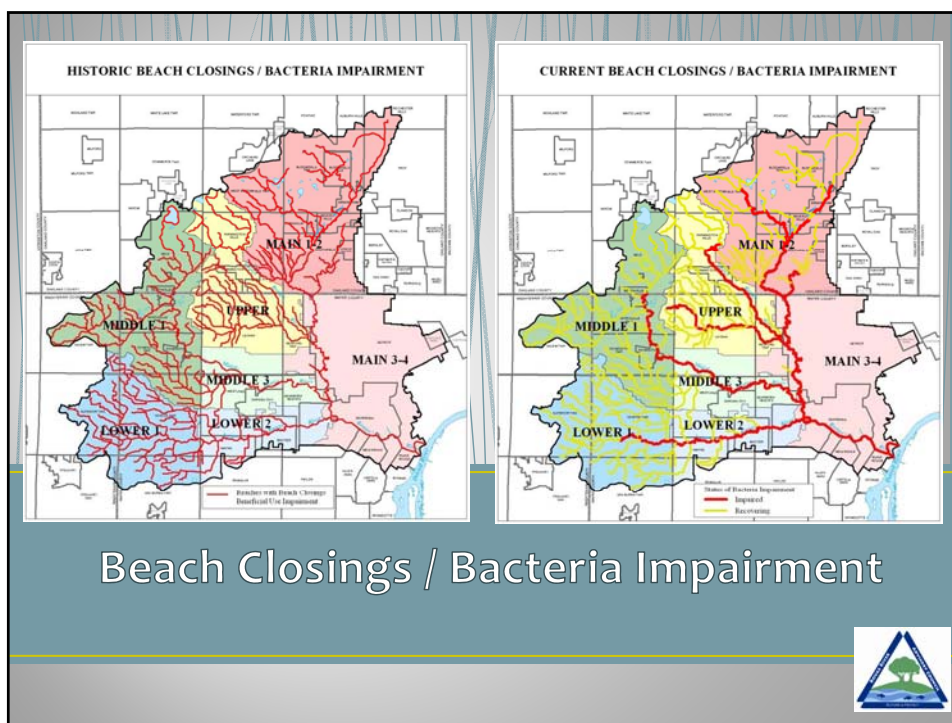


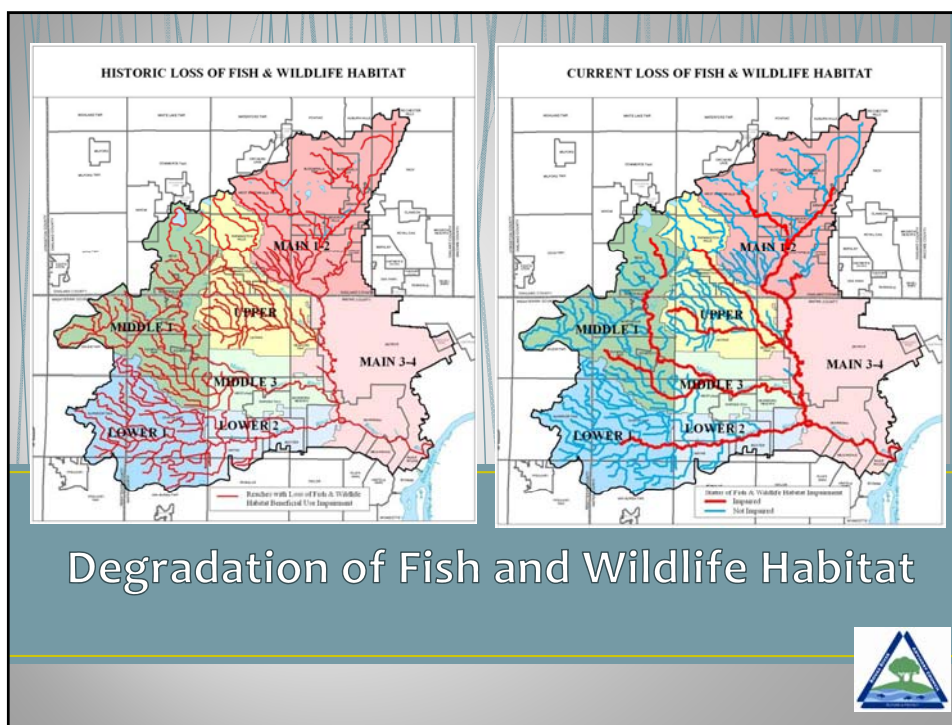
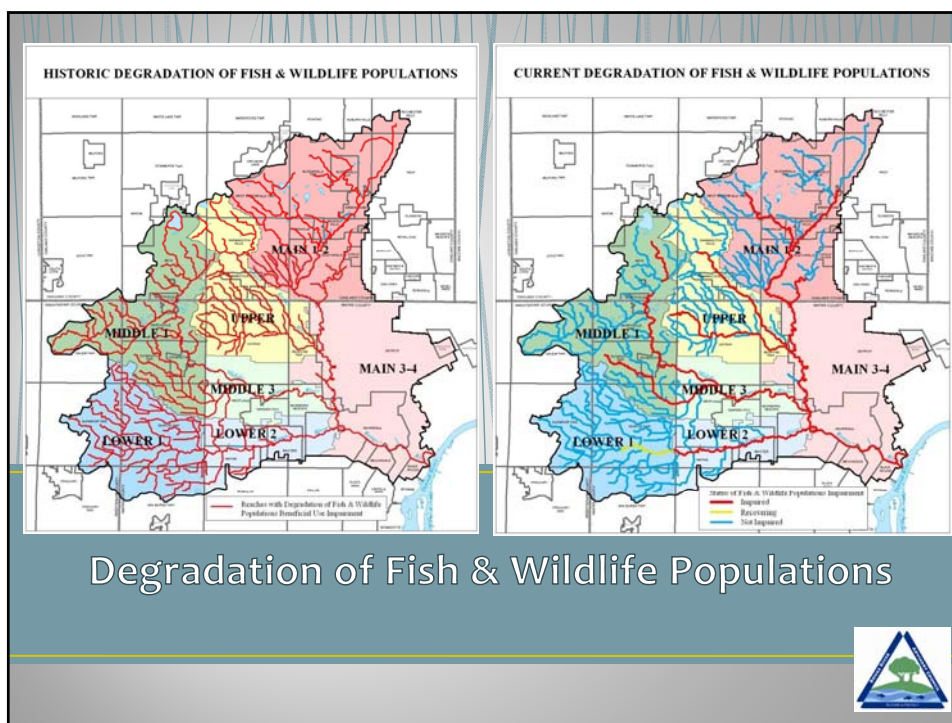
Restrictions on Fish Consumption











Acknowledgments

- Funding provided by
 - State Public Advisory Council
 - Great Lakes Commission
- Fiduciary
 - Alliance of Rouge Communities
- Technical Support
 - MDEQ Office of Great Lakes
 - RRAC members

www.allianceofrougecommunities.com/rrac.html

